

## LIGHT WOOD | CERAMIC | SOPRAWAY NG2 (SOPREMA), 5/8" T&G PLYWOOD, ACOUSTIVIBE | MORTAR

Acoustic performance  
AIIIC: 47 to 52  
ASTC: 54 to 57

### ASSEMBLY DETAILS

#### STRUCTURE

Light wood

#### ASSEMBLY COMPONENTS

Sopraway NG2 (Soprema), 5/8" T&G plywood, Acoustivibe

#### FLOOR TYPE

Ceramic

#### INSTALLATION TYPE

Mortar

#### CEILING TYPE

Acoustic insulator

#### NUMBER OF GYPSUM

2

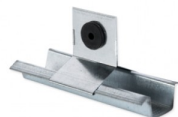


### SOPRAWAY NG2 (SOPREMA)



Plus de détails

### ACOUSTIVIBE



Plus de détails