

LIGHT WOOD | LAMINATE | ACOUSTIBOARD (SOPREMA), 5/8" T&G PLYWOOD, ACOUSTIVIBE | FLOATING

Acoustic performance
AIIIC: 57 to 61
ASTC: 56 to 59

ASSEMBLY DETAILS

STRUCTURE

Light wood

ASSEMBLY COMPONENTS

Acoustiboard (Soprema), 5/8" T&G
plywood, Acoustivibe

FLOOR TYPE

Laminate

INSTALLATION TYPE

Floating

CEILING TYPE

Acoustic insulator

NUMBER OF GYPSUM

2

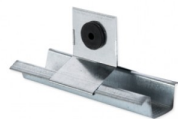


ACOUSTIBOARD (SOPREMA)



[Plus de détails](#)

ACOUSTIVIBE



[Plus de détails](#)