

LIGHT WOOD | VINYL | INSONOMAT (SOPREMA), 1"1/2 CONCRETE TOPPING, 5/8" T&G PLYWOOD, ACOUSTITECH LV, ACOUSTIVIBE | FLOATING

Acoustic performance

AllC: 58 to 62

ASTC: 58 to 62

ASSEMBLY DETAILS

STRUCTURE

Light wood

ASSEMBLY COMPONENTS

Insonomat (Soprema), 1"1/2 concrete topping, 5/8" T&G plywood, AcoustiTECH LV, Acoustivibe

FLOOR TYPE

Vinyl

INSTALLATION TYPE

Floating

CEILING TYPE

Acoustic insulator

NUMBER OF GYPSUM

2



INSONOMAT (SOPREMA)



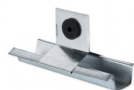
Plus de détails

ACOUSTITECH LV



Plus de détails

ACOUSTIVIBE



Plus de détails