

LIGHT WOOD | WOOD | 1"1/2 CONCRETE TOPPING, 5/8" T&G PLYWOOD, INSONOMAT (SOPREMA), ACOUSTITECH LEAD 3.3, ACOUSTIVIBE | DOUBLE GLUED DOWN

Acoustic performance

AllC: 57 to 61

ASTC: 58 to 62

ASSEMBLY DETAILS

STRUCTURE

Light wood

ASSEMBLY COMPONENTS

1"1/2 concrete topping, 5/8" T&G plywood, Insonomat (Soprema), AcoustiTECH Lead 3.3, Acoustivibe

FLOOR TYPE

Wood

INSTALLATION TYPE

Double glued down

GLUE

Adhesive AD-532+, Adhesive AD-844 MS, Adhesive AD-316

CEILING TYPE

Acoustic insulator

NUMBER OF GYPSUM

2



**INSONO
MAT
(SOPRE
MA)**



Plus de

**ACOUST
ITECH
LEAD
3.3**



**ADHESI
VE
AD-532
±**



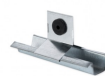
Plus de

**ADHESI
VE
AD-844
MS**



Plus de

**ACOUST
IVIBE**



Plus de
détails

**ADHESI
VE
AD-316**



Plus de
détails

détails

Plus de
détails

détails

détails

www.acousti-tech.com