

LIGHT WOOD | WOOD | 1"1/2 CONCRETE TOPPING, 5/8" T&G PLYWOOD, INSONOMAT (SOPREMA), INSONOFLOOR (SOPREMA), ACOUSTIVIBE | FLOATING

Acoustic performance

AllC: 58 to 62

ASTC: 58 to 62

ASSEMBLY DETAILS

STRUCTURE

Light wood

ASSEMBLY COMPONENTS

1"1/2 concrete topping, 5/8" T&G plywood, Insonomat (Soprema), Insonofloor (Soprema), Acoustivibe

FLOOR TYPE

Wood

INSTALLATION TYPE

Floating

CEILING TYPE

Acoustic insulator

NUMBER OF GYPSUM

2



INSONOMAT (SOPREMA)



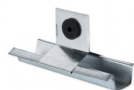
Plus de détails

INSONOFLOOR (SOPREMA)



Plus de détails

ACOUSTIVIBE



Plus de détails